

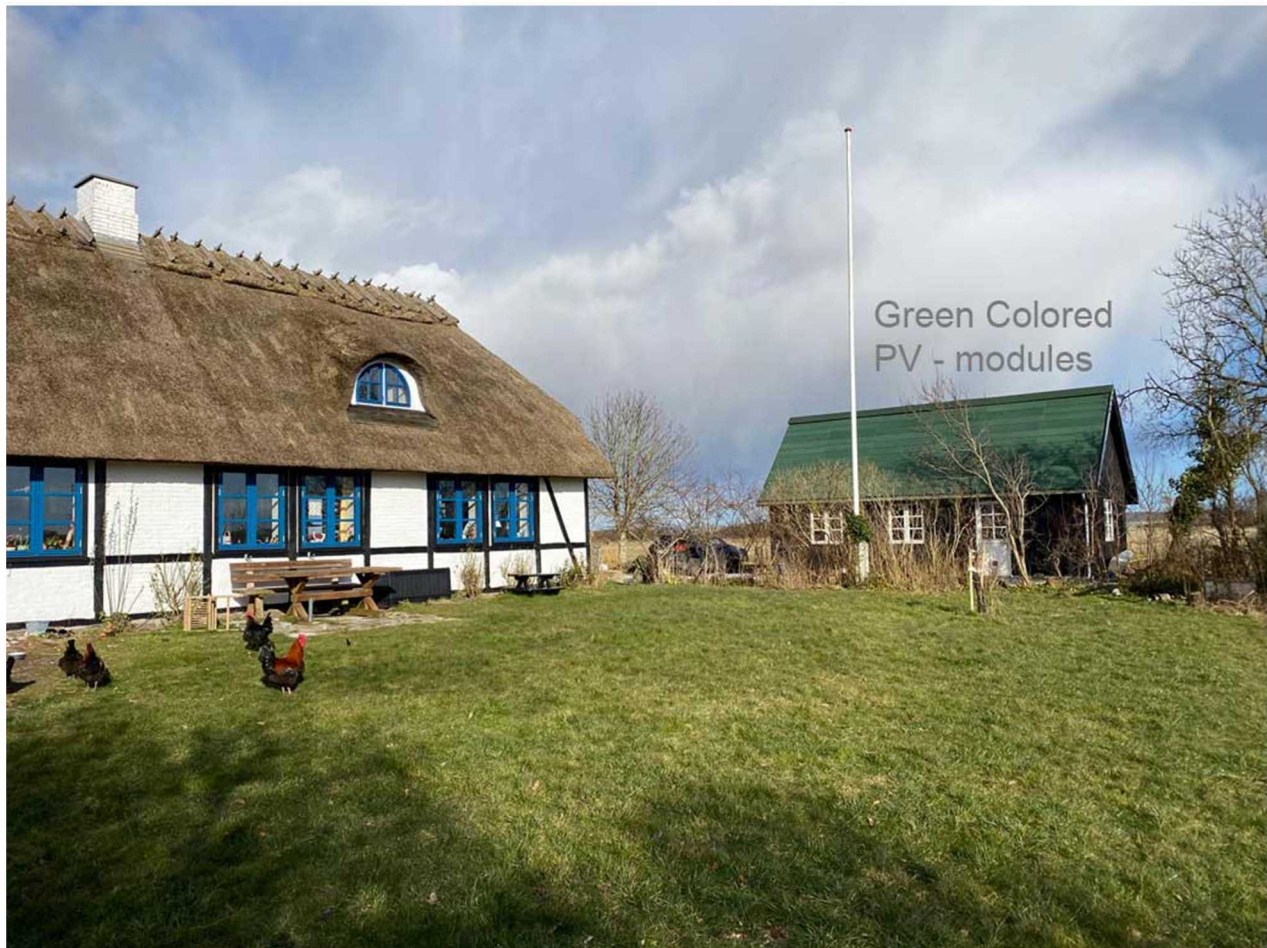


Dansk Solenergi ApS
Danish Solar Energy Ltd.

Dansk Solenergi ApS Danish Solar Energy Ltd.
Flensbjerg 8 Phone :+45 3536 7777
DK-4960 Holeby Mail: nfo@dansksolenergi.dk
Homepage: danishsolarenergy.com or www.dansksolenergi.dk

Danish Solar Energy ldt.

CFR - Colored Solar Modules



Make Your Home Greener – and More Beautiful

Our unique, building-integrated colored solar modules are the perfect solution for those who want to combine stunning architecture with green energy. They serve both as an aesthetic building envelope and an efficient energy source, helping make your home partially or even fully self-sufficient in electricity.

With a strong, tempered glass surface, the solar panels offer an exceptionally long lifespan and require minimal maintenance – a secure investment in both your home and your future. Thanks to the flexible CFR mounting system, the solar modules can be discreetly integrated into your existing roof without major renovations, preserving the look of your home – while enjoying lower electricity bills for many years to come.



**Top-Quality Solar Modules
Produced in Denmark**



Danish Solar Energy ldt.

We have been producing solar modules since 1993 and are considered one of the world's pioneers in the industry. Our high-tech, fully automated factory in Denmark manufactures solar modules of the highest quality – tailored to meet your specific needs.

Choose your roof color – or ask us for more.

The fully automated production process at our Danish factory ensures high precision and consistently superior quality. Our advanced finishing machine creates a homogeneous, uniform design.

The solar cells are placed behind either a specially hardened low-reflection glass plate or a strong transparent foil for flexible module solutions.

Encapsulated in a high-strength composite and sealed with a premium back laminate, the modules offer excellent protection against UV, moisture, extreme temperatures, microparticles, and aggressive gases like ammonia.

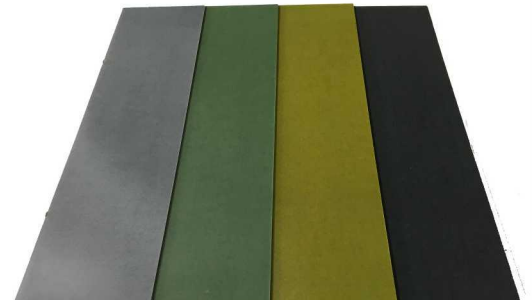
Exceptional stability is achieved through carefully selected materials, advanced lamination, and a specially developed color-infused composite that withstands even the harshest environments.

A flat, compact junction box is mounted on the back — waterproof, UV-resistant, microbe-proof, and highly temperature stable.

Danish Solar Energy's patented composite ensures long-lasting color durability.

The custom mounting system enhances aesthetics while ensuring a robust, waterproof roof construction.

25-Year Performance Warranty:
90% output for the first 10 years, 80% after 25 years.



All modules are manufactured according to the guidelines of international certifications IEC 61215, Safety Class II, and EN 61730.